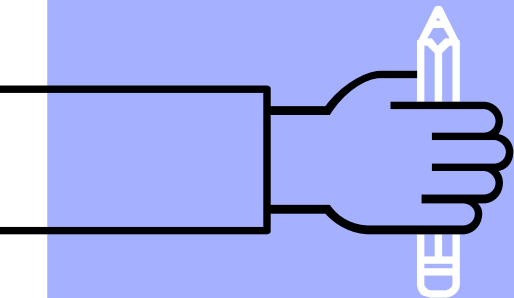
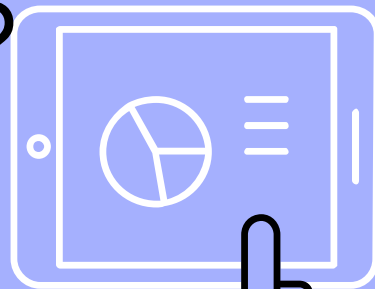


What's openEuler?

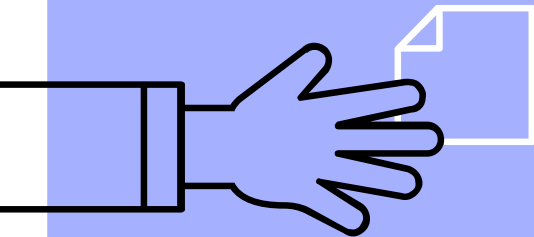
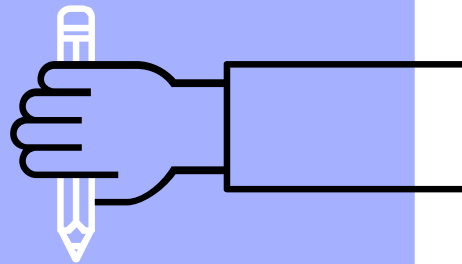


“

A community is a social unit (a group of living things) with commonality such as norms, religion, values, customs, or identity. Communities may share a sense of place situated in a given geographical area (e.g. a country, village, town, or neighbourhood) or in virtual space through communication platforms.



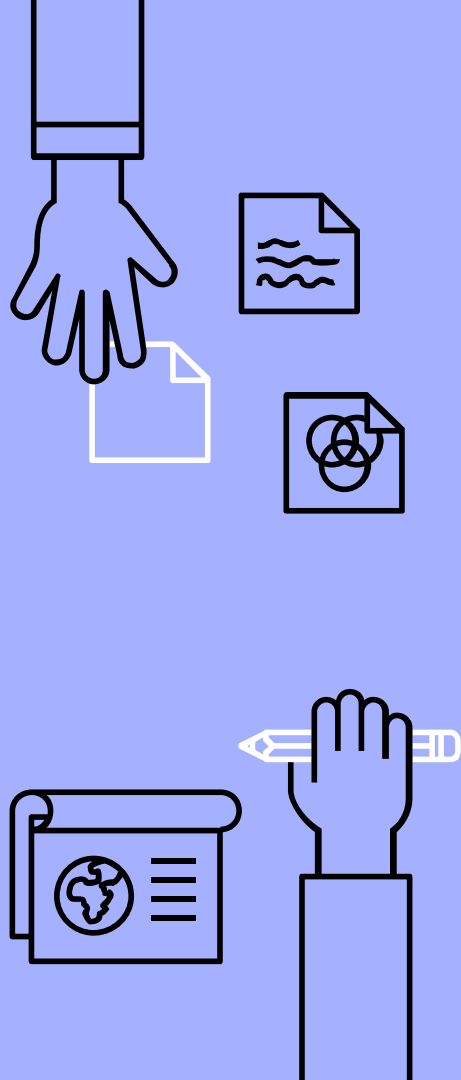
openEuler Community

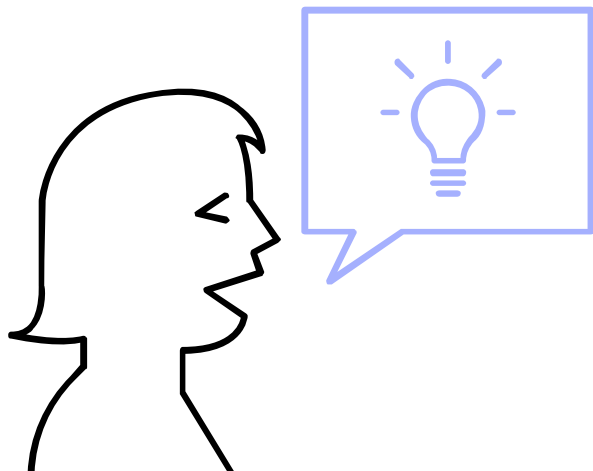


What's openEuler?

openEuler is an open source, free Linux distribution platform. The platform provides an open community for global developers to build an open, diversified, and architecture-inclusive software ecosystem. openEuler is also an innovative platform that encourages everyone to propose new ideas, explore new approaches, and practice new solutions.

More info on openEuler at <https://space.bilibili.com/527064077>

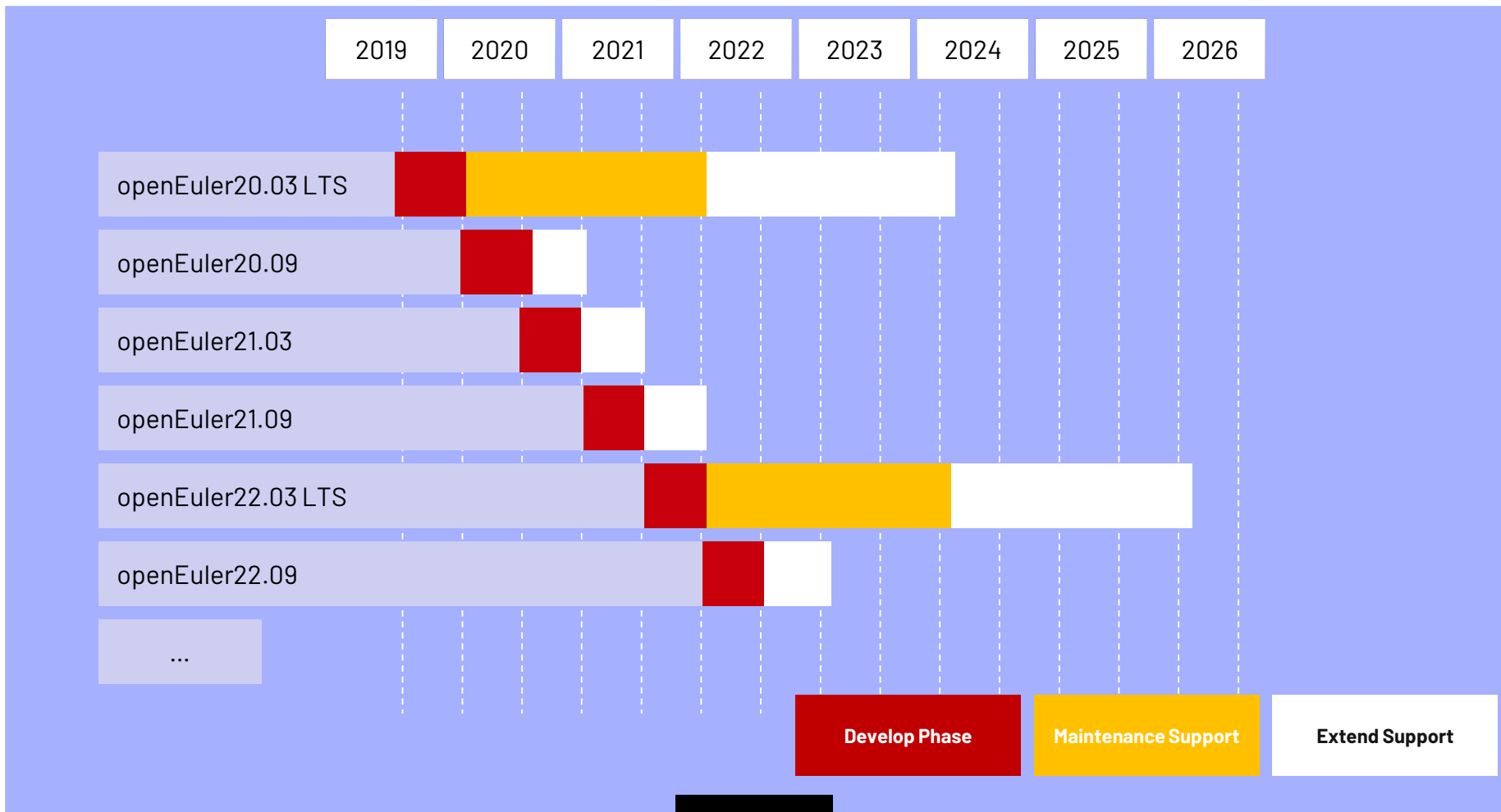


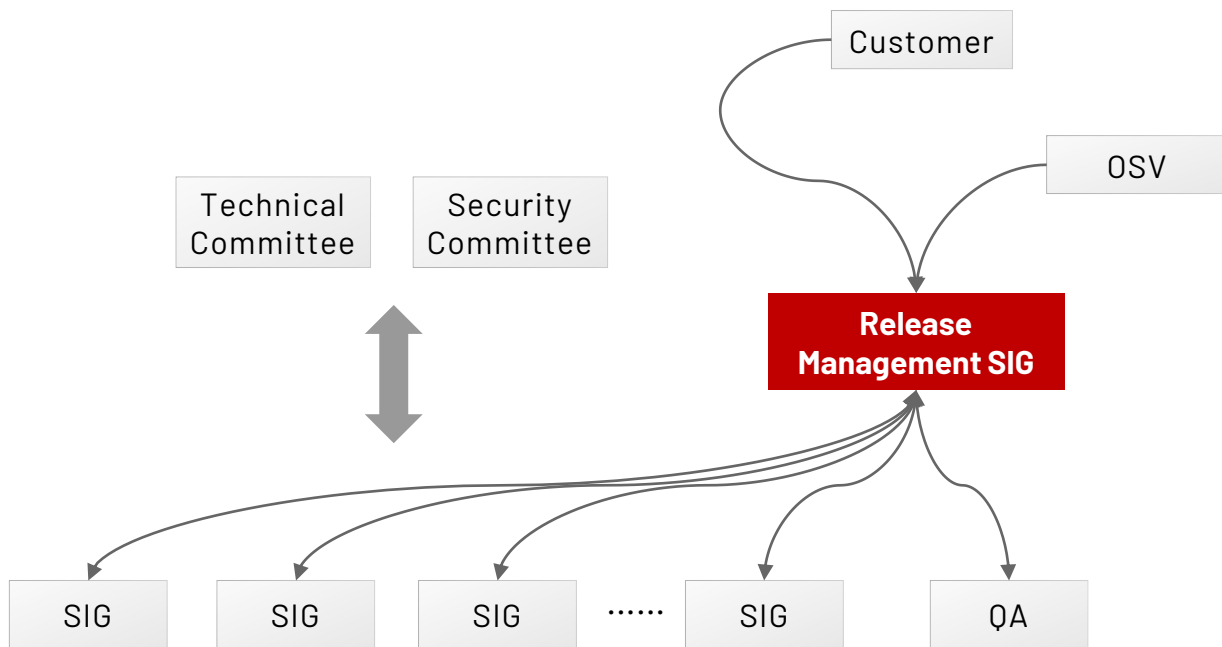


An open source, free Linux
distribution platform
<https://gitee.com/src-openeuler>

An innovative platform
<https://gitee.com/openeuler>

Governance of openEuler
Specific Interest Group +
Technical Committee



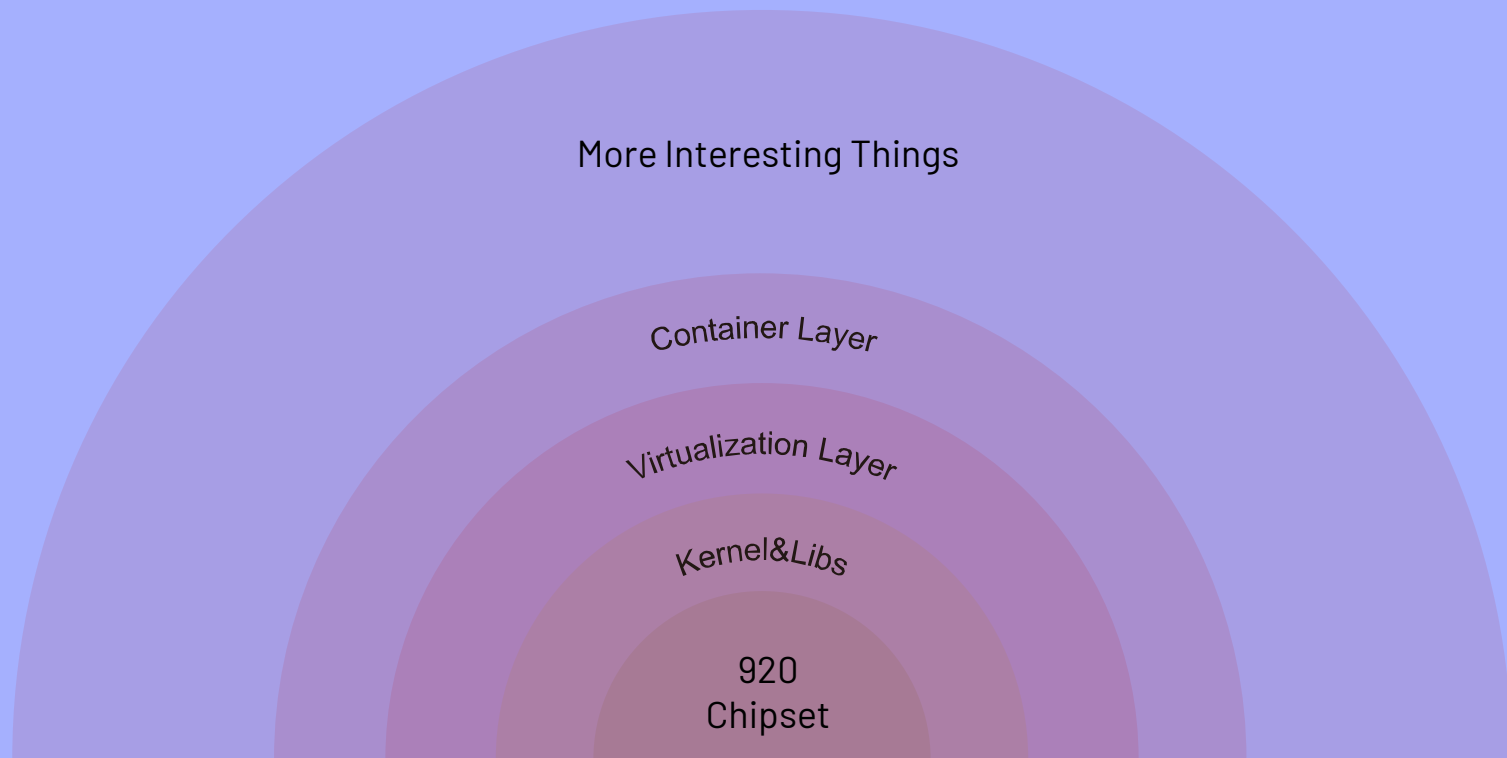


Release
Management
SIG

openEuler 20.03
3000+ Packages



openEuler 20.09
6000+ Packages



How to run openEuler aarch64?

1. Peng Cheng Laboratory

https://openeuler.org/zh/blog/fred_li/2020-03-25-apply-for-vm-from-pcl.html

2. Huawei Cloud

Hong Kong Region

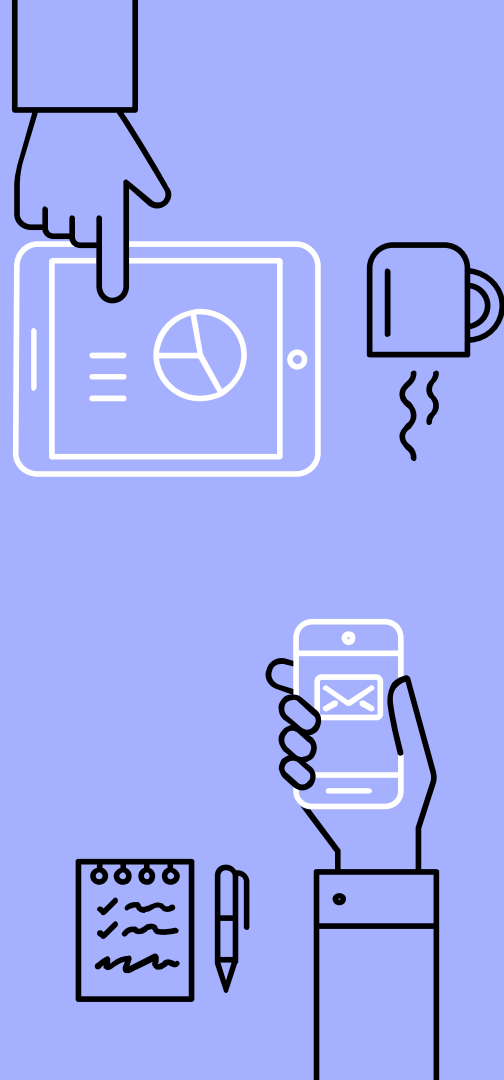
Beijing Region

3. Raspberry Pi

<https://openeuler.org/zh/blog/woqidaideshi/2020-05-25-raspberrypi-userguide.html>

<https://gitee.com/openeuler/raspberrypi>

4. Huawei Taishan and Powerleader



How to involve openEuler?

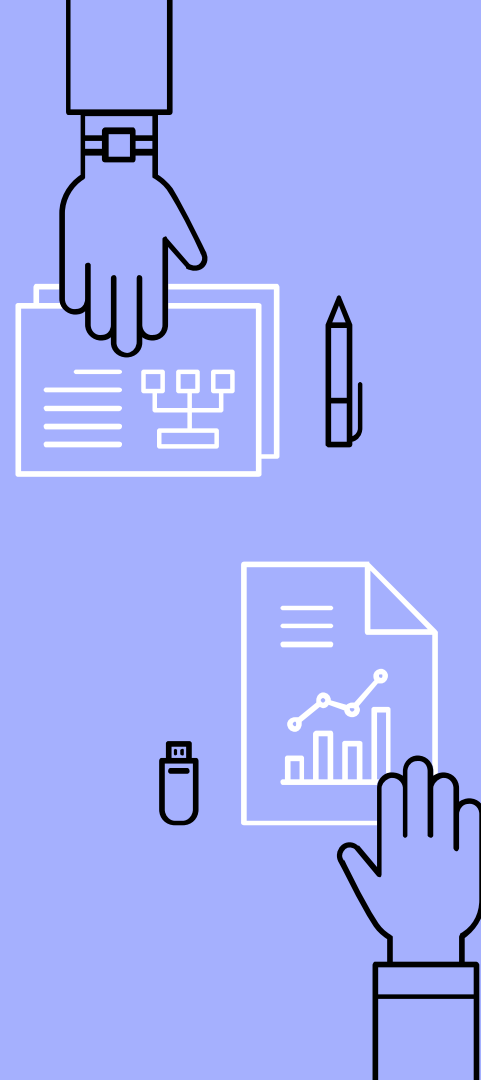
- ▶ CLA [1]
- ▶ MulanPSL - 2.0 [2]
- ▶ Issue [3]
- ▶ PR to fix bugs
- ▶ Contribute packages

[1] <https://openeuler.org/en/cla.html>

[2] <https://opensource.org/licenses/MulanPSL-2.0>

[3] <https://gitee.com/openeuler/community-issue/issues>

[4] <https://openeuler.org/zh/blog/myeuler/2020-5-13-openEuler-Travel.html>



YOU CAN ALSO JOIN OUR EVENTS [3]

College Students

Summer 2020 [1]

GREEN LEAGUE 2020

openEuler 2020 College
Developer Competition

Developers

openEuler Summit [2]

Offline Meetup

F2F Private Meeting

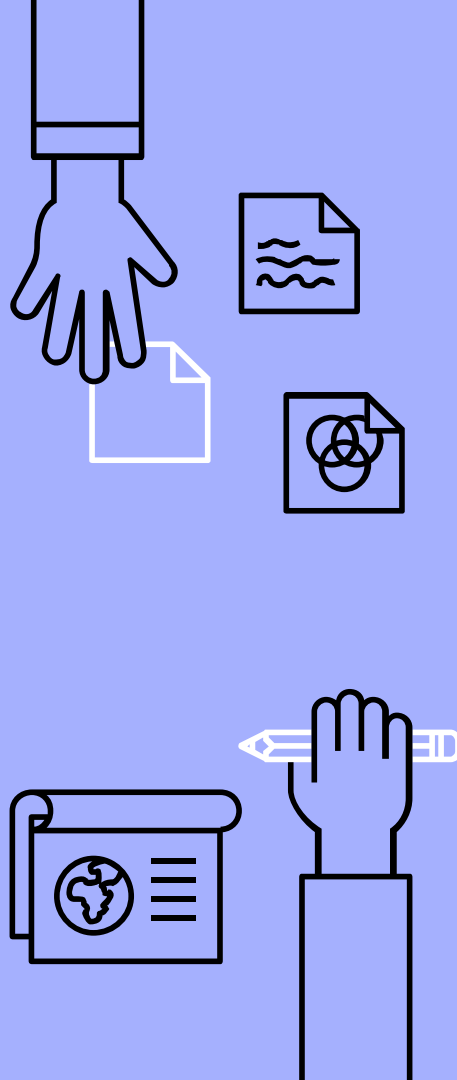
openEuler Summit - Beijing

openEuler Workshop -
Hangzhou

[1] <https://openeuler.org/zh/events/20200607.html>

[2] <https://space.bilibili.com/527064077/channel/detail?cid=121715>

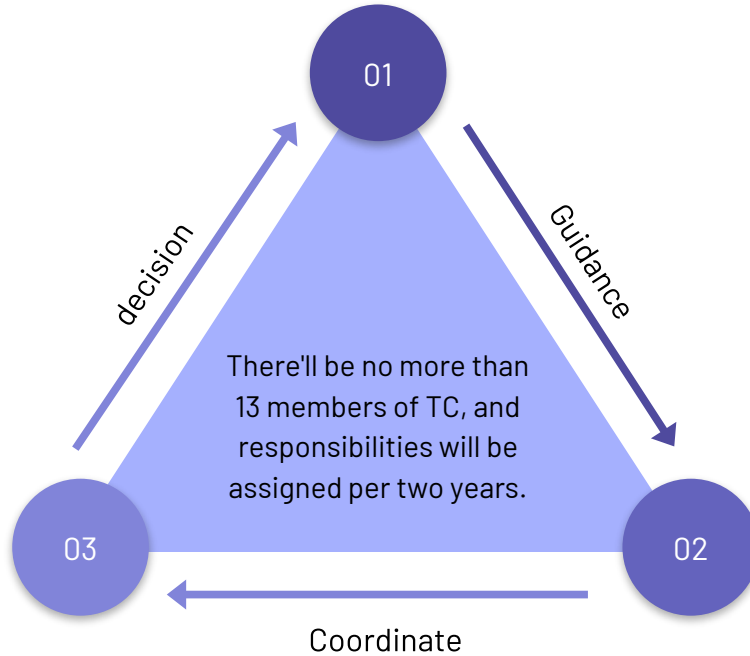
[3] <https://openeuler.org/zh/interaction/salon-list/>



OUR CONTRIBUTOR JOURNEY

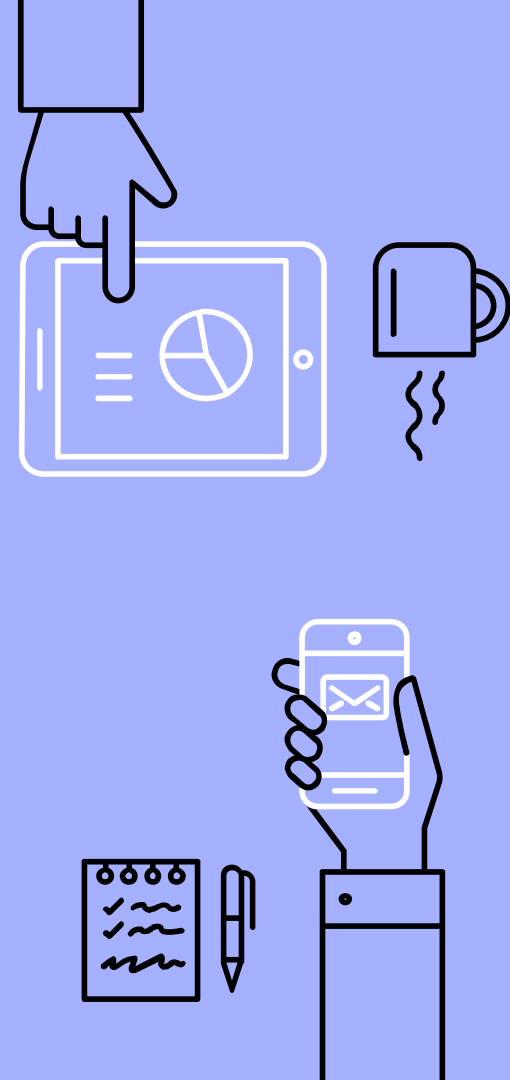


TECHNICAL COMMITTEE



MULTIPLE ARCHITECT

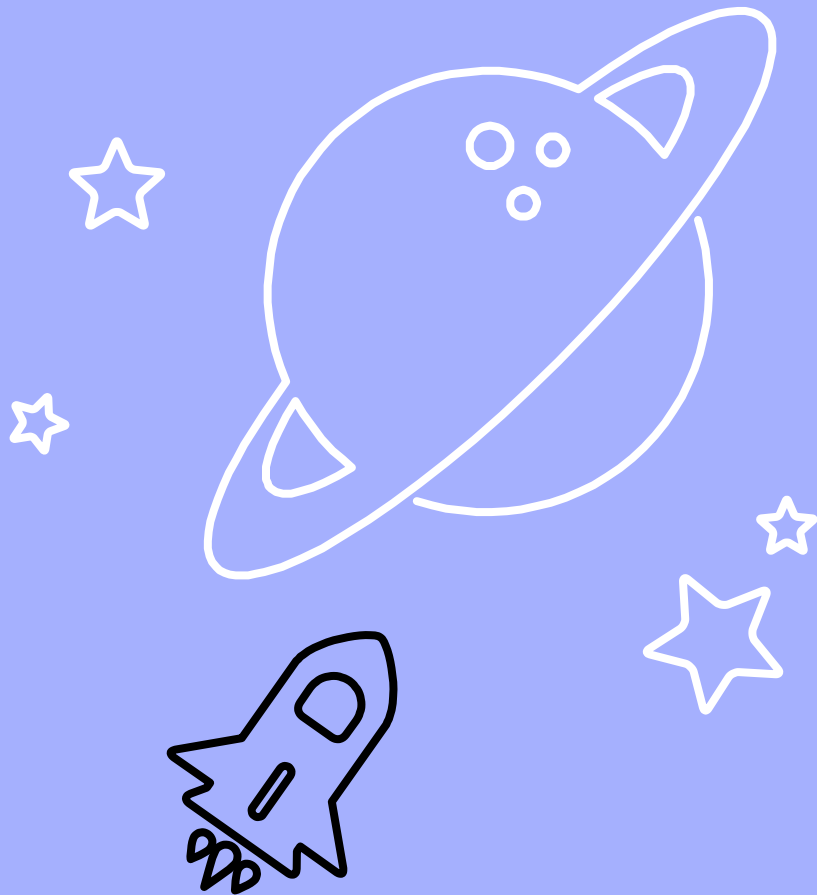
- ▶ x86_64
- ▶ aarch64
- ▶ RISC-V

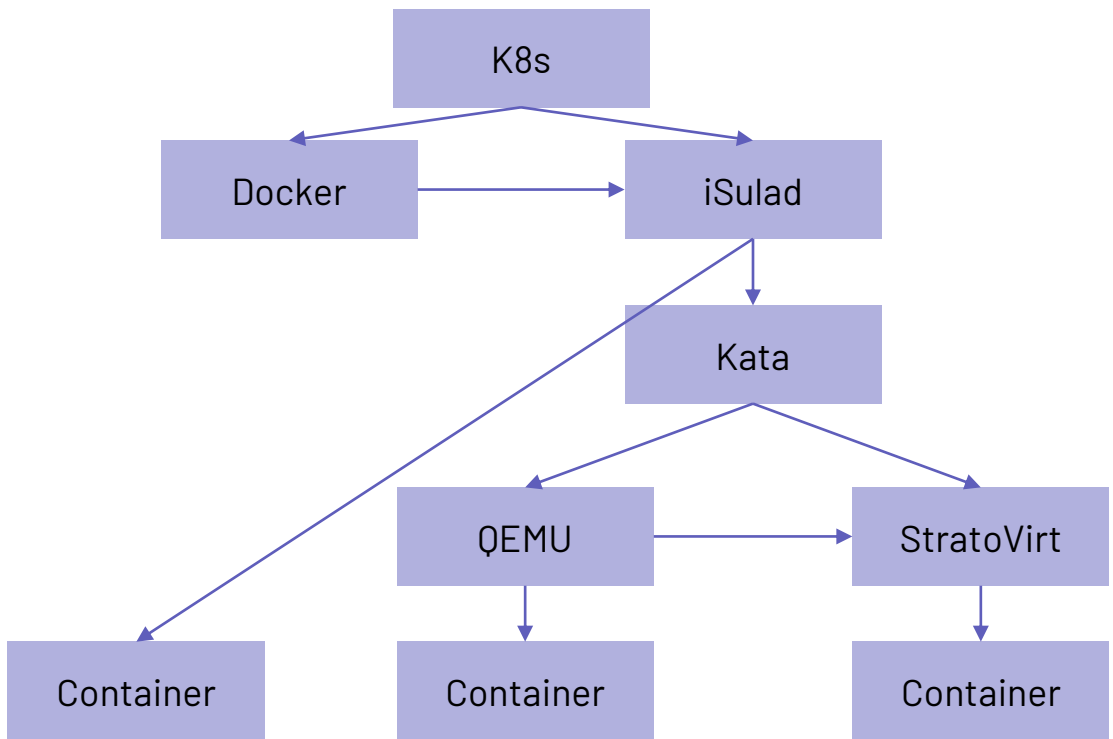


Idea

Incubating

- ▶ iSula
- ▶ StratoVirt
- ▶ A-Tune





iSula + StratoVirt

secGear Service Layer

secGear Middleware Layer

secGear Base Layer

secGear Host Unified APIs

secGear Enclave Unified APIs

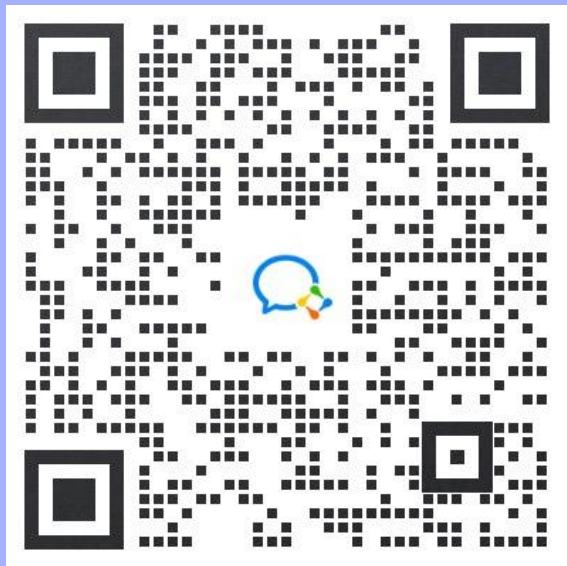
Intel
SGX

RISC-V
Keystone

ARM
TrustZone

secGear
Framework

<https://www.oschina.net/2020-openeuler>



THANKS!

Any questions?

You can find me at:

@genedna

eli@patch.sh

